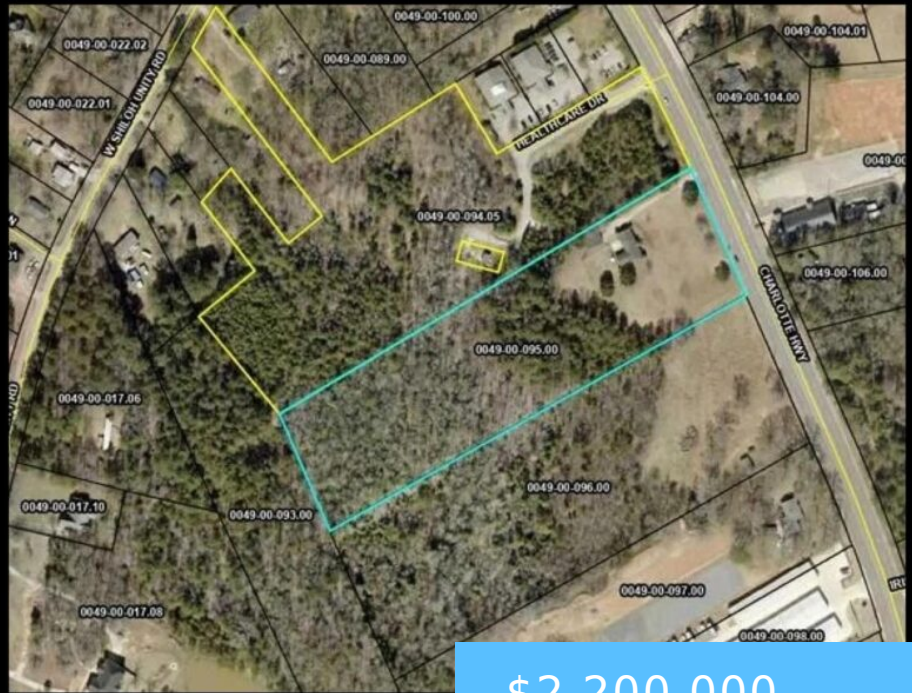


15.55 Acres

- Explosive Growth Area of Lancaster County, SC
- Zoned General Business
- Two Contiguous Parcels Available
- Highly Traveled SC/NC Hwy 521 Corridor (Charlotte Hwy)



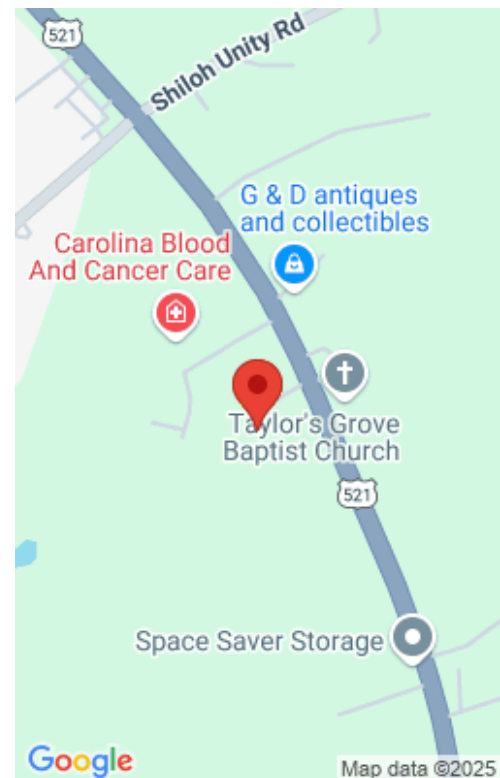
\$2,200,000

2383 CHARLOTTE HIGHWAY

<https://vizorealty.com>

Prime 15.55 Acres located on Lancaster County's fastest growing thoroughfare Charlotte Hwy/Hwy 521 connecting SC/NC. This property consists of two parcels of 8.88 acres and 6.67 acres with a total of 463' road frontage nestled against Lancaster Medical Park and in the center of several new residential developments. Its' General Business zoning and great traffic count of 27,500 is optimal with the incoming developments in this immediate area: Only 1.3 miles from Lennar Homes new Roselyn Active Adult 55+ community consisting of 1,475 acres, 1,800 home sites and state of the art athletic center, 1/2 mile from DR Horton's new 121 acre community of 300 homesites, and an expected new development from 150 acres just east of the site. You will also find this site is only 4 miles N of the HWY 9 Bypass and McWhirter Airfield, 5 miles from MUSC Medical Center, and only 3 Miles of Lancaster's USC Campus. Will entertain offers offering a quick close and possibly separating/splitting. Ask me for details. SC RANKS #7 FOR LOWEST PROPERTY TAXES. LANCASTER COUNTY, SC RANKS EVEN LOWER, JUST BEHIND #2, ALABAMA. ANOTHER REASON TO INVEST IN LANCASTER COUNTY.

- Commercial
- LOTS AND ACREAGE
- ACTIVE



Basics

Date added: Added 11 hours ago
Category: LOTS AND ACREAGE
Status: ACTIVE
MLS ID: 597914
Price Per Acre: \$141,479

Listing Date: 2024-12-03
Type: Commercial
Lot size, acres: 15.55 acres
TMS: 0049.00.095.00

Building Details

Water: Available

HOA Info

HOA: N

School Info

School District: Lancaster County

Listing Courtesy Of

Listing Office: 10th Avenue Realty

Listing Agent: Dawn, H, Jordan

